



## Your Raised Access Floor Partner



### Calcium Sulphate Core Panel

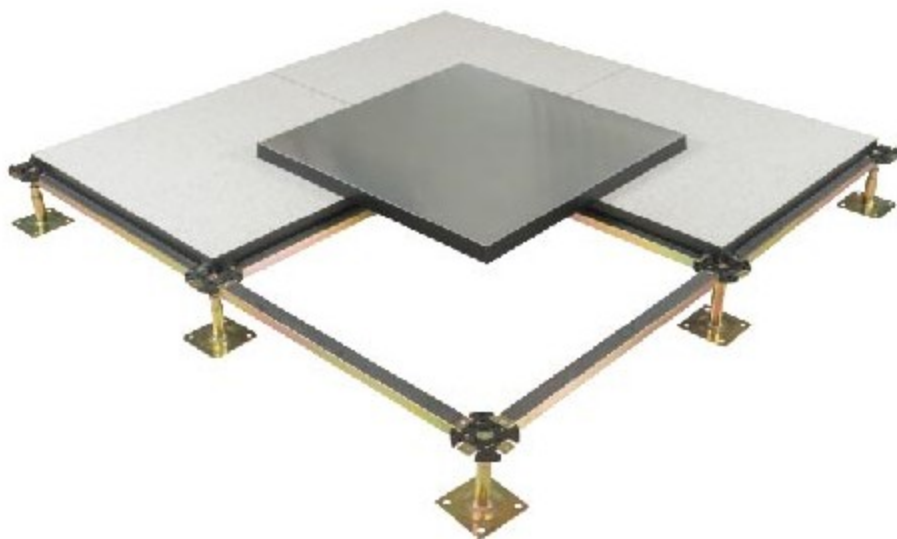
It also is called calcium sulfate board, calcium sulphate hollow floor. It's an important material of anti-static calcium sulphate raised floor and encapsulated calcium sulphate raised floor.

- The quality can be traced back to the mineral resources;
- The gypsum powder used for the core panel is 100% natural;
- Density is between 1200-1700kg/m<sup>3</sup>;
- Size can be 610\*610 / 603\*603 / 500\*500mm, thickness 23-38mm;

### Calcium Sulphate Raised Floor

#### ► Our Advantages:

1. Calcium sulphate core panel could be purchased separately, we also provide encapsulated calcium sulphate/wood core raised floor;



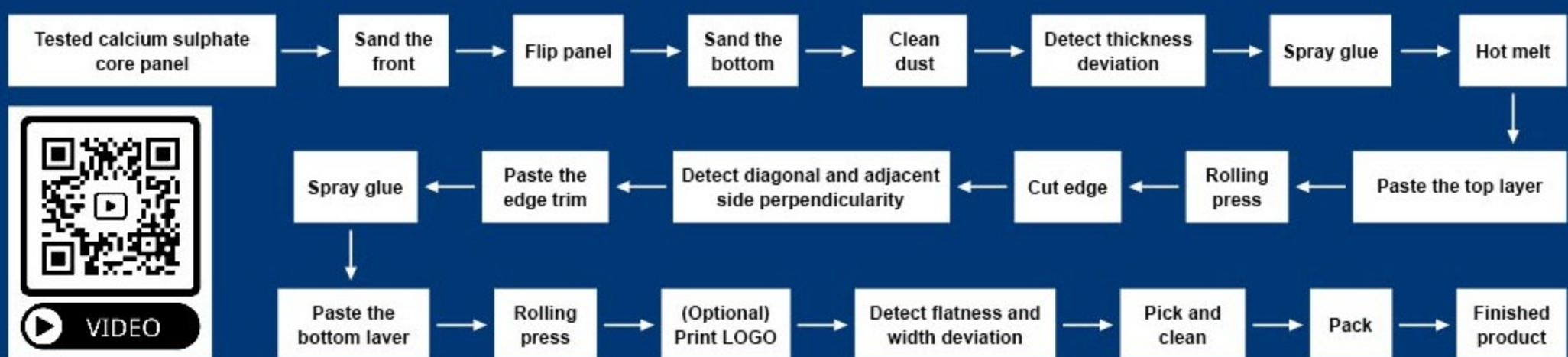
2. Support high-end customization: Size(500\*500/600\*600/800\*800mm and special sizes like 600\*300mm)  
Covering: 1.0-2.0mm Anti-static Laminate HPL, 2.0-3.0mmPVC, 10mm Ceramic, Linoleum, Natural stone, Build plate, Rubber, Parquet and etc.

3.The load capacity is higher than other similar manufacturers in China

Sheet 1 Load Test of Core Panel				Sheet 2 Load Test of Finished Panel			
Size	610*610mm	610*610mm	610*610mm	Size	600*600*32mm		
Deflection	25mm	29.6mm	36mm	Deflection			
0.5mm	54.5 KG	99 KG	171.5 KG	0.5mm	207.5 KG	171.5 KG	223 KG
1.0mm	111.5 KG	207.5 KG	343 KG	1.0mm	401 KG	343 KG	419 KG
1.5mm	164.5 KG	312 KG	510.5 KG	1.5mm	593 KG	521 KG	620 KG
2.0mm	210 KG	419 KG	601 KG	2.0mm	787 KG	697 KG	822.5 KG
Ultimate Load	290 KG	472 KG	639 KG	2.5mm	979 KG	866.5 KG	1018 KG
				Ultimate Load	2045 KG	1876 KG	2315 KG

4.High-tech production technology and equipments

**Abeite Calcium Sulphate Raised Floor Production Process**



A: Sanding process can greatly optimize the flatness of the floor, tolerance <math><0.02\text{mm}</math>;

B: Could print your logo, and special production technology improves floor load;

C: Different edge trim of floor bottom;

D: Import two fully automatic production equipments from Germany HOMAG and Italy SCM, which can improve the quality and greatly shorten delivery time;



**Contact us**

Sales Manager: Gail Shao  
 WhatsApp / Wechat: +86 18261186876  
 E-mail: gail@abeiteraisedfloor.com  
 Web: www.abeiteraisedfloor.com

**Products:**

Calcium Sulphate Core Panel / Calcium Sulphate Raised Floor  
 Wood core Raised Floor / Anti-Static Steel Raised Floor  
 Ceramic Finish Raised Floor / Aluminum Raised Floor  
 Air-flow Raised Floor / Glass Viewing panel / Accessories