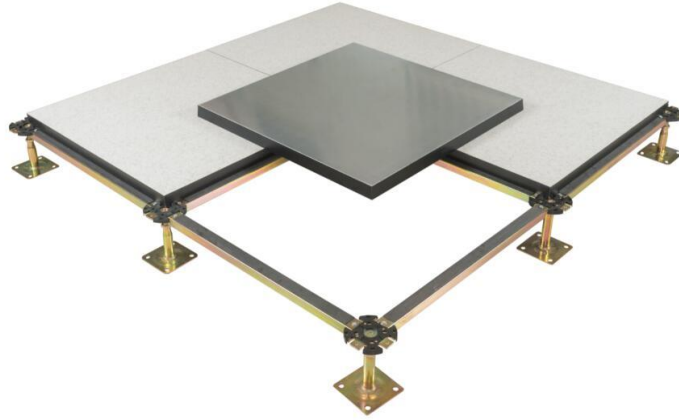


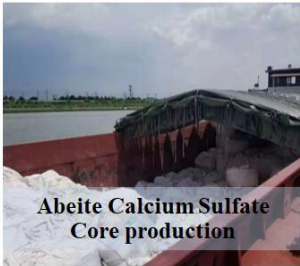
Changzhou Abeite Computer Room Equipment Co.,Ltd



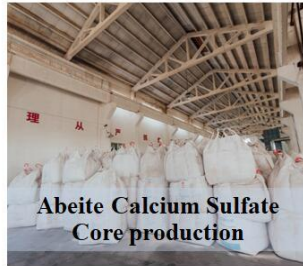
► Our advantages:

1. Calcium sulphate core panel could be purchased separately, We also provide encapsulated calcium sulphate/wood core raised floor;

Abeite Raised Floor



Abeite Calcium Sulfate
Core production



Abeite Calcium Sulfate
Core production



Abeite Calcium Sulfate
Core production



Abeite Calcium Sulfate
Core production



Abeite Calcium Sulfate
Core production

Quality can be traced
back to the mineral source!

2. Support high-end customization: Size(500*500/600*600/800*800 and special size like 600*300mm)
Covering: 1.0-2.0mm Anti-static Laminate HPL, 2.0-3.0mmPVC, 10mm Ceramic, Linoleum, Natural stone, Buld plate, Rubber, Parquet and etc;

**AbeiteTM
Raised Floor**

Special size raised floor
Customized special size raised floor panels for your project needs.

gail@abeiteraisedfloor.com
+86 18261186876

3. High load of panel , Test video: https://www.youtube.com/watch?v=D5_qxeDtL8c

Core thickness: 30mm

Upper covering: 1.2mm HPL

Bottom covering: 0.4mm galvanized steel

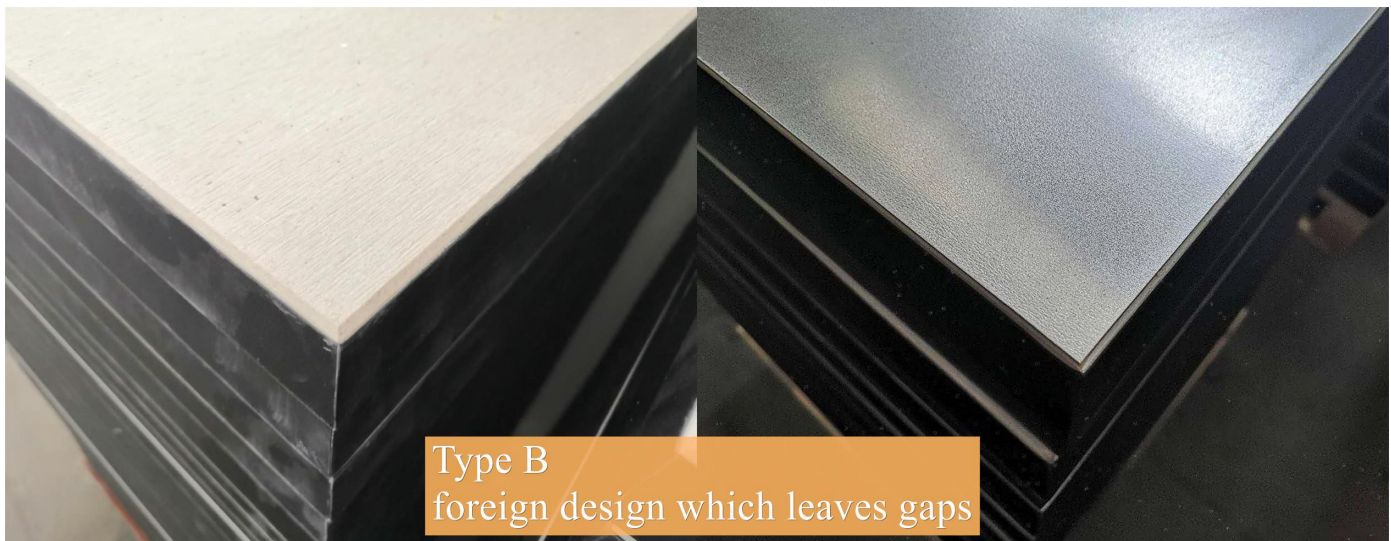
Deflection	KG
0.5	207.5
1.0	401
1.5	593
2.0	787
2.5	979
Ultimate Load	2045

► **High-tech production technology and equipments**

Production Process A: Sanding process can greatly optimize the flatness of the floor, tolerance < 0.02mm;

Production Process B: Could print your logo, and special production technology improves floor load; <https://www.youtube.com/watch?v=1OV5te7HdLI>

Production Process C: Different edge trim of floor bottom;



Production Process D: Import two fully automatic production equipment from Germany, plan to start production this year, it can greatly increase production capacity and shorten delivery time;